

# **Hole-in-the-Rock 4x4 Trail Lake Canyon – Cottonwood Canyon**

**See the associated kmz file for more details.**

## **Hole-in-the-Rock Trail Lake Canyon – Cottonwood Canyon**

The Hole-in-the-Rock Trail is best known for the crevice (called the Hole-in-the-Rock) in the west wall of the 1300' deep Colorado River gorge, which Mormon pioneers widened to make a wagon road in 1879/1880. However, it was the terrain east of the river gorge that was deemed impossible by most of their scouts. This terrain nearly caused them to abandon their journey. When one visits this section of their trail and sees their roads carved/blasted out of solid sandstone and experiences firsthand the area's stark ruggedness, one is awed by the pioneers' determination and ingenuity. This map is provided for those who wish to have a pioneering experience of their own. Please study the warnings carefully. The typical report I have received back from those using this map to visit the area for the first time is that even after reading the warnings, they were not prepared for the difficulty of the terrain, did not take enough water, and/or did not plan for enough time. Best wishes on your adventure.  
Lamont Crabtree

### **WARNINGS!!!**

#### **For your safety, please study and follow these guidelines.**

1. It is highly recommended that newcomers take along a guide that is acquainted with the trail.
2. There are few road/trail signs; thus, closely following map is crucial.
3. The Lake Canyon Hole-in-the-Rock Trail is a very difficult, technical four-wheel drive trail.
4. Never travel alone! Two or more vehicles are recommended.
5. Always leave a detailed itinerary with a responsible party.
6. Due to what appears to be relatively short distances, travel time is typically underestimated. Due to the difficulty of the trail, it can take a full day to reach the top of Cottonwood Canyon. If you wish to see it all, plan on spending at least one night on the trail.
7. This route is only suited for ATV's, trail bikes or high clearance four-wheel drive vehicles. When using a jeep or larger vehicle, an experienced spotter will at times be needed. NOTE: Short wheel base ATV's are prone to roll on the steepest sections.
8. Fine powder-like sand! When moist or wet, the sand presents no challenge, but during dry seasons heavy vehicles can get stuck.
9. When visiting the east arm of Lake Canyon the 4x4 path goes through a wash in the bottom of the canyon. Do not drive the water without first checking the water depth and for potential quicksand.
10. **In the fall of 2006, flash floods washed out the road through the second (west) arm of Lake Canyon. In the spring of 2007, the San Juan County Road Department opened a trail connecting the Nokai Dome road with the Hole-in-the-Rock Trail. You can still reach the east and west arms of Lake Canyon but the road through the west arm is completely washed out.**

11. Hot!! Temperatures during summer months can reach 100 degrees or higher. Due to the exertion required to traverse the trail on an ATV or trail bike, it is common to underestimate the amount of water needed. Take much more water that you think you will need!
12. Water / springs!! Water for emergency replenishing is typically available in Lake Canyon, the base of The Chute and in Cottonwood Canyon. Water must be filtered - even then it stinks! During drought conditions, the springs can dry up.
13. Emergency Exits. The only possible exit, other than the way you came, is to reach boaters on Lake Powell via the Rincon or Cottonwood Canyon.
14. Emergency Communications! Cell towers are located on Navajo Mountain. Cell service is typically available whenever you can see the top of Navajo Mountain provided that your phone works with the provider in the area. Check your provider's coverage in that area.
15. To ensure that the trail remains open for everyone's future enjoyment, please stay on established trails, obey park service closure signs and carry out all trash.
16. Throughout the winter and early spring, the area between Lake Canyon and Lake Powell is used for cattle grazing. Please leave any fences (regardless of how primitive) in the state you find them.
17. **At the base of Slick Rocks just beyond the interpretive sign, the 4x4 route has a significant drop-off. See map designation E. Do not proceed down this unless you are sure that your vehicle can get back up! At times vehicles must be wrenched back up. Short wheel-base ATVs have flipped backwards here. Also, vehicles with insufficient ground clearance will high center and lose needed traction. An alternative route around this drop will hopefully be established.**



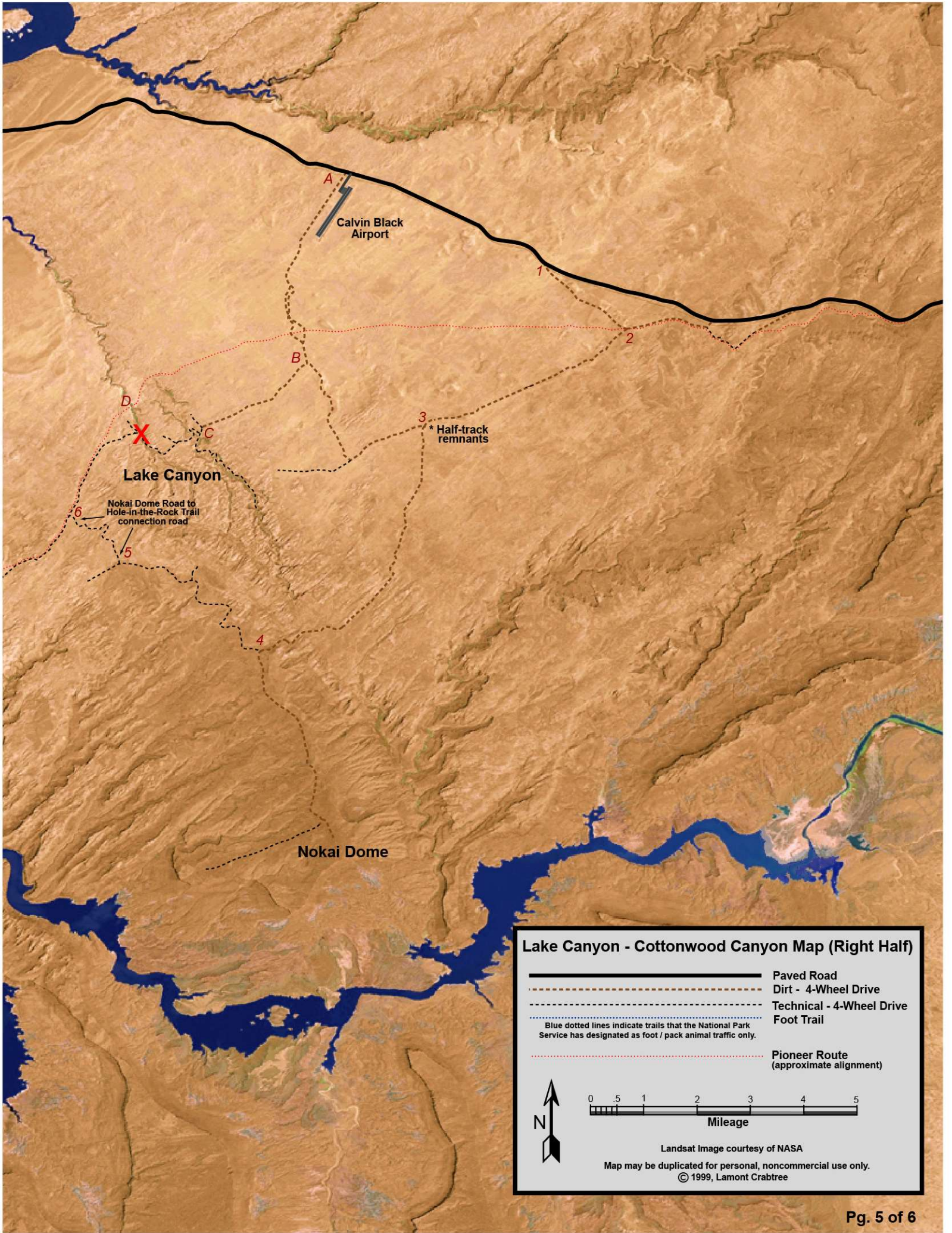
18. **There are other very challenging locations on the 4x4 road beyond Slick Rocks. Taking the time to be spotted / guided over these areas is essential.**



### Map Reference Notes and GPS Data

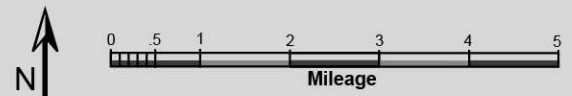
Reference #	Description	Latitude	Longitude
A	Turnoff to Lake Canyon (Just west of and adjacent to Calvin Black Airport fence and just outside the Glen Canyon Boundary)	37 26.780	-110 33.668
B	Fork (to/from Nokai Dome road)	37 23.501	-110 34.294
C	Ruin (perched on the crest of Lake Canyon)	37 22.465	-110 36.067
D	Dam site (actual crossing of pioneers) Foot access only.	37 22.876	-110 37.237
1	Nokai Dome road turnoff	37 25.275	-110 30.329
2	Nokai Dome road fork	37 24.170	-110 28.908
3	Road fork and remnants of an old half-track. The right fork goes to Lake Canyon. Continue straight on Nokai Dome road to bypass Lake Canyon.	37 22.535	-110 32.320
4	Fork – right to Hole-in-the-Rock connection road.	37 18.776	-110 35.133
5	Fork - connection road to the Hole-in-the-Rock Trail. When on solid sandstone, follow the path of least resistance and look for rock cairns.	37 20.267	-110 37.485
6	Fork – Nokai connecting road merge with Hole-in-the-Rock/Lake Canyon road.	37 21.024	-110 38.324
E	Slick Rocks (bottom of the pioneers' descent down Slick Rocks. The pioneers' route down Slick Rocks must be hiked – too steep for any motorized vehicles. Leave vehicles at base and ascend on foot. The beginning of the trail up is adjacent to the east side of the BLM sign.	37 17.895	-110 41.549
F	Rincon road intersection	37 14.731	-110 46.096
G	Chute	37 13.682	-110 47.269
H	Cheese Camp (likely location – no definitive proof)	37 12.970	-110 48.189
I	Crest of Cottonwood Hill (end of motorized travel)	37 13.062	-110 49.370
J	The Little Hole-in-the-Rock	37 13.208	-110 49 722
K	The Dugway	37 13.284	-110 49.884
L	The Sand Hill	37 13.555	-110 50.043
M	Hall's Corrals (Charles Hall lived in Cottonwood Canyon, providing the ferry service between 1880-1883. These remnants may be his.) <b>Floods in 2006 wash these corrals away.</b>	37 13.862	-110 51.015





**Lake Canyon - Cottonwood Canyon Map (Right Half)**

- Paved Road
- Dirt - 4-Wheel Drive
- Technical - 4-Wheel Drive
- Foot Trail
- Blue dotted lines indicate trails that the National Park Service has designated as foot / pack animal traffic only.
- Pioneer Route (approximate alignment)



Landsat Image courtesy of NASA  
Map may be duplicated for personal, noncommercial use only.  
© 1999, Lamont Crabtree



# Lake Canyon - Cottonwood Canyon Map (Left Half)

- Paved Road
- Dirt - 4-Wheel Drive
- Technical - 4-Wheel Drive
- Foot Trail

Blue dotted lines indicate trails that the National Park Service has designated as foot / pack animal traffic only.

Pioneer Route  
(approximate alignment)



Landsat Image courtesy of NASA

Map may be duplicated for personal, noncommercial use only.  
© 1999, Lamont Crabtree

